

## Activity Quiz 4

# The Flow of Food: An Introduction



Name \_\_\_\_\_ Date \_\_\_\_\_

### True or False?

- ① \_\_\_\_\_ Rinsing a cutting board will prevent cross-contamination with the next food item placed on it.
- ② \_\_\_\_\_ Some thermometers cannot be calibrated.
- ③ \_\_\_\_\_ Chicken held at an internal temperature of 125°F (52°C) has been time-temperature abused.

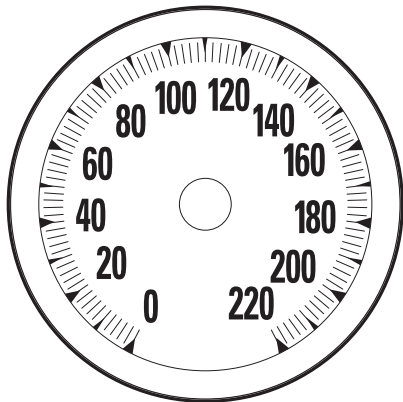
### Cross-Contamination

Name two ways you can prevent cross-contamination.

- \_\_\_\_\_
- \_\_\_\_\_

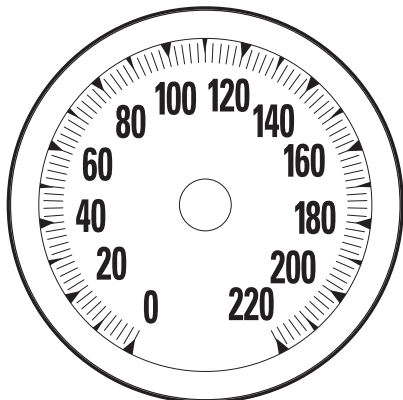
### Temperature Danger Zone

- ① Fill in the thermometer below to show the temperature danger zone in either Fahrenheit or Celsius.



\_\_\_\_\_ °F ( \_\_\_\_\_ °C) to \_\_\_\_\_ °F ( \_\_\_\_\_ °C)

- ② Fill in the thermometer below to show the temperature range at which foodborne pathogens grow most quickly in either Fahrenheit or Celsius.



\_\_\_\_\_ °F ( \_\_\_\_\_ °C) to \_\_\_\_\_ °F ( \_\_\_\_\_ °C)

### General Thermometer Guidelines

Fill in the blanks with the word or words that complete the sentences correctly.

- ① Thermometers used to measure the temperature of food must be accurate to \_\_\_\_\_ .
- ② Place a probe into the \_\_\_\_\_ part of the food.
- ③ Wait \_\_\_\_\_ seconds after inserting a bimetallic stemmed thermometer before recording the temperature of a food.
- ④ Make sure your thermometers are accurate by \_\_\_\_\_ them regularly.
- ⑤ Sanitize thermometers by using a sanitizing solution for \_\_\_\_\_ surfaces.

## Answer Key

### True or False?

- ① F
- ② T
- ③ T

### Cross-Contamination

Here are some ways to prevent cross-contamination:

- Use separate equipment for each type of food.
- Clean and sanitize all work surfaces, equipment, and utensils after each task.
- Prep raw meat, fish, and poultry; and ready-to-eat food at different times.
- Buy prepared food.

### Temperature Danger Zone

- ① 41°F (5°C) to 135°F (57°C)
- ② 70°F (21°C) to 125°F (52°C)

### General Thermometer Guidelines

- ① +/- 2°F or +/- 1°C
- ② thickest
- ③ 15
- ④ calibrating
- ⑤ food-contact